

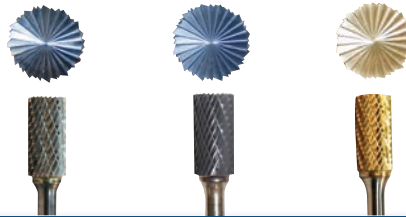
Cryo-Burr® Carbide Burrs (cont.)

Cylindrical 1/4" Shank



Head Dia.	Head Length	Cryo-Burr	Cryonite™ Blue	Cryonite Gold	Cryonite Alum. Gold
3/16"	5/8"	820-3-0620	-	-	-
1/4"	5/8"	820-3-0820	830-3-0060	830-1-0060	820-5-0820
1/4"	5/8"(6"OAL)	820-3-0821	-	-	-
5/16"	3/4"	820-3-1024	830-3-0061	830-1-0061	-
3/8"	3/4"	820-3-1224	830-3-0062	830-1-0062	820-5-1224
1/2"	1"	820-3-1632	830-3-0063	830-1-0063	820-5-1632
5/8"	1"	820-3-2032	-	-	820-5-2032
3/4"	3/4"	820-3-2424	-	-	-
3/4"	1"	820-3-2432	-	-	820-5-2432
1"	1"	820-3-3232	-	-	-

Cylindrical, End-Cut 1/4" Shank



Head Dia.	Head Length	Cryo-Burr	Cryonite Blue	Cryonite Gold
1/4"	5/8"	819-8-0820	830-3-0065	830-1-0065
5/16"	3/4"	819-8-1024	830-3-0066	830-1-0066
3/8"	3/4"	819-8-1224	830-3-0067	830-1-0067
1/2"	1"	819-8-1632	830-3-0068	830-1-0068

Cylindrical, Ball Nose 1/4" Shank



Head Dia.	Head Length	Cryo-Burr	Cryonite Blue	Cryonite Gold	Cryonite Alum. Gold
3/16"	5/8"	821-3-0620	-	-	-
1/4"	5/8"	821-3-0820	830-3-0050	830-1-0050	821-5-0820
1/4"	5/8"(6"OAL)	821-3-0821	-	-	-
5/16"	3/4"	821-3-1024	-	-	-
3/8"	3/4"	821-3-1224	830-3-0051	830-1-0051	821-5-1224
1/2"	1"	821-3-1632	830-3-0054	830-1-0054	821-5-1632
5/8"	1"	821-3-2032	-	-	-
3/4"	1"	821-3-2432	-	-	-