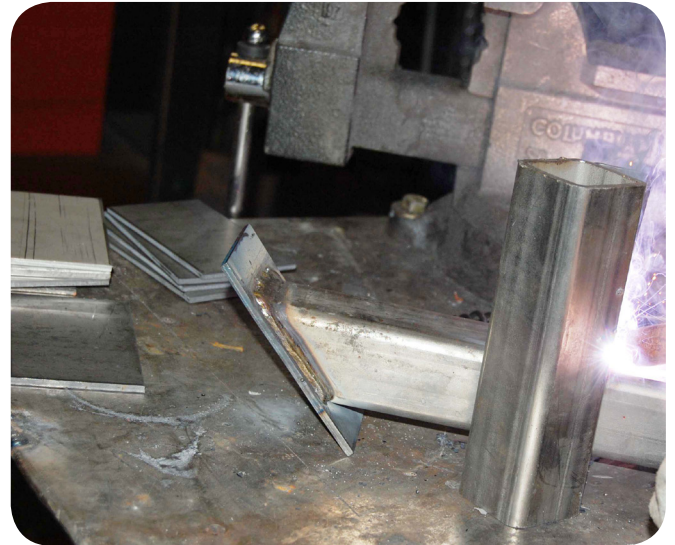


Partsmaster™ PMFC MS-G Multi-Steel Flux Cored Wire

The Partsmaster PMFC MS-G multi-steel flux cored wire is designed for welding carbon steel, high alloy steels to stainless steel, or any combination of these materials. A great maintenance welding wire alloy that takes away the guess work on choosing the right wire for these materials. The smooth arc makes this wire ideal for welding in all positions. This wire can also be used for cladding carbon steels and low alloy steels.

Partsmaster PMFC MS-G features:

- Suitable for welding in all positions
- Low spatter loss
- Easy slag removal
- Good crack resistance
- Good inter-granular corrosion resistance
- Minimal fume generation
- Use either 100% CO₂ or 75% Ar/25% CO₂



Code #	Spool	Diameter	Amperage	Voltage	Polarity	Tensile Strength	Elongation	Electrode Stick-Out
080-7-2545	25#	.045"	100-250	24-30	DCEP	89,700 psi	35%	1/2" - 5/8"
080-7-2562	25#	.062"	200-300	28-34	DCEP	89,700 psi	35%	1/2" - 5/8"

